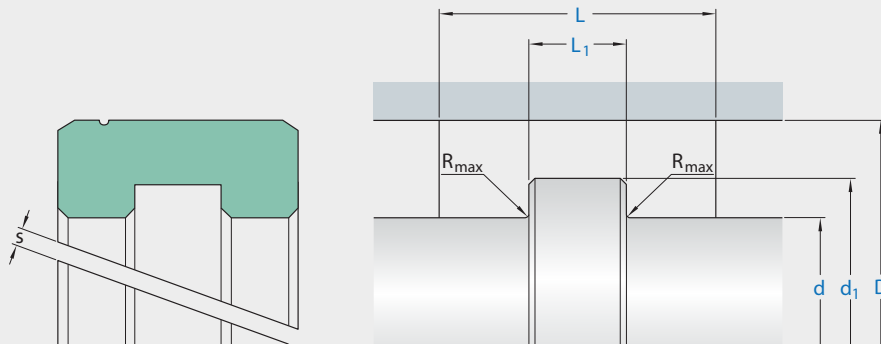


## F07



Ordering dimensions in blue

Sealing material Surface roughness	TPU / Elastomers		PTFE	
	$R_{tmax}$	$R_a$	$R_{tmax}$	$R_a$
	m		m	
Sliding surface	$\leq 2,5$	0,05–0,3	$\leq 2$	0,05–0,2
Bottom of groove	$\leq 6,3$	$\leq 1,6$	$\leq 6,3$	$\leq 1,6$
Groove face	$\leq 15$	$\leq 3$	$\leq 15$	$\leq 3$

Bearing area: 50–95% and a cutting depth of 0,5  $R_z$  based on  $C_{ref} = 0\%$

### Standard dimensions

Minimum nominal inside diameter  
 $d \geq 22 \text{ mm}$ .

Depending on the application, the geometry of the guide element should be adapted to the type of application (please refer to the profile description – Seal housing). Because uncut versions would be pointless for assembly reasons, rotating applications should to be avoided. Standard version with cutting gaps  $> 0$  do not allow a supporting function. For a supporting function a cutting gap of  $s = 0$  and a spiral groove is provided. Cutting gap  $s$  † values depend on material and temperature. For detailed information please refer to the profile description.

### application



not bolded symbols; please consult our technical for application limitations

## operating parameters & material

diameter range: up to 600 mm

material	temperature	max. surface speed	max. specific load
Ecotal <sup>2</sup>	-50 °C ... +100 °C	4,0 m/s	25 N/mm <sup>2</sup>
Ecomid <sup>2</sup>	-40 °C ... +100 °C	4,0 m/s	25 N/mm <sup>2</sup>
Ecoflon 2	-200 °C ... +200 °C	4,0 m/s	3 N/mm <sup>2</sup>
Ecoflon 3	-200 °C ... +200 °C	5,0 m/s	4,5 N/mm <sup>2</sup>
TEX	-40 °C ... +130 °C	1,0 m/s	90 N/mm <sup>2</sup>

the stated operation conditions represent general indications. it is recommended not to use all maximum values simultaneously. surface speed limits apply only to the presence of adequate lubrication film.

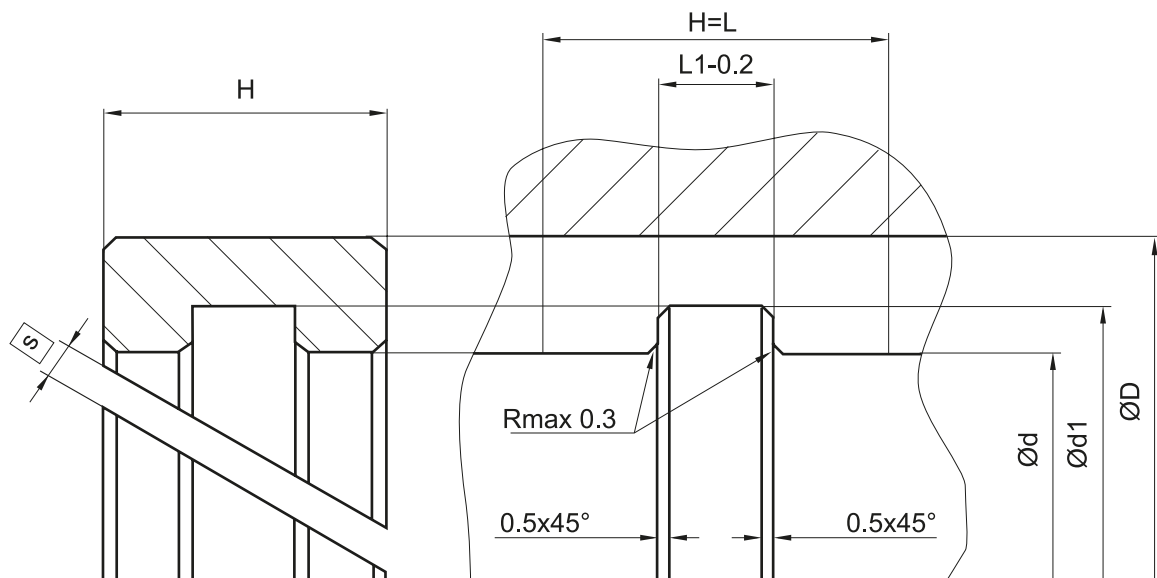
<sup>2</sup> Ecotal up to  $\varnothing 260$  mm, Ecomid above  $\varnothing 260$  mm.

## fitting & installation

split bearing ring F07 to be snapped onto the piston.

## seal & housing recommendations

please note that we are able to produce those profiles to your specific need or any non standard housing. for detail measurements, please see seal-mart catalog...



### variations:

- cutting gap width  $s = \dots \text{mm}$
- endless

don't hesitate to contact our technical department for further information or for special requirements (temperature, speed etc.), so that suitable materials and/or designs can be recommended.